

EX - PLUGS AND RECEPTACLES

10 A to 125 A
plugs and receptacles plastic version for zone 1, 2, 21 and 22

1 A good connection

Providing electrical energy there, where it is most needed – even in hazardous areas for the Zones 1, 2, 21 and 22.

Non-stationary electrical apparatus have generally high requirements on the energy/power supply. Robust plugs and receptacles as well as a high chemical resistance are at the first glance very important. Electrical reliability is a must not only for all connectivity products.

A high safety standard, a steady hold and faultless contacting even under vibration or the effects of an aggressive atmospheric environment are the basis for a secure and reliable utilisation.

CEAG plugs and receptacles offer more, apart from the proven technology, this product series is defined by its innovative details. For example, the very efficient cable strain relief or the new coding system of the various versions offers different solutions for a secure and problem free utilization in all areas.

Just to round the product off, the user in the normal industrial sector becomes exactly the same product advantages. Robust industrial versions fulfil all requirements appertaining to mechanical and chemical durability. For the stationary repair power supplying in hazardous explosive areas, there is a specially conceived version available that fulfils all the necessary safety requirements. Used in a module sense, individual solutions are no problem at all. The CEAG wall socket for instance can be mounted on to the pre-installed mounting frame without having to use tools – installation without a hot work permit.

Apart from the plugs and receptacles for the European market, we also have plugs and sockets extra for the US market, which are in accordance to all of the necessary standards UL and safety protection systems used there. The available standard range used here, are the 20 A, 30 A, 60 A and 100 A.

International approvals.

- **Nickel-plated contacts**
- **Low insertion force**
- **Safety standard IP66 applies also in the plugged-in state**
- **Full AC-3 switching ability**
- **Self-cleaning lamellar contacts, low transition resistance**
- **All-pole on/off switching**
- **Easy plugging**



Ex-plugs and receptacles 16 A 3/4/5-pole up to 690 V



Wall socket



Flange socket



Coupler



Plug

Technical data

Ex-plugs and receptacles acc. to IEC 60309-1/2 16A

Marking accd. to 2014/34/EU	Wall socket, plug, coupler: II 2G / Ex db eb [ia] IIC / IIB+H2 T6 II 2 D Ex IIIC / IIIB T80 Db Flange socket: II 2G Ex db eb IIC / IIB+H2 Gb II 2 D Ex tb IIIC Db
EC-Type Examination Certificate	Wall socket, plug, coupler: BVS 17 ATEX E 053 X Flange socket: BVS 15 ATEX E 101 U
IECEx Certificate of Conformity	Wall socket, plug, coupler: IECEX BVS 17.0045X Flange socket: IECEX BVS 15.0088U
EAC (TR)	1EX D E [IA] IIC/IIB T6 GB X EXTB IIIC T80°C DB X
Permissible ambient temperature	-55 °C to + 55 °C
Rated voltage	up to 415 V, (3-pole) / 690 V, (4-pole) / 690 V, (5-pole) AC
Rated current	16 A
Frequency	up to 400 Hz
Rated making / Rated breaking capacity AC-3 accd. EN 60947-3	Ue 250 V / Ie 16 A (3-pole) Ue 690 V / Ie 16 A (4-pole) Ue 500 V / Ie 16 A (5-pole)
External back-up fuse, max.	without therm. protection: 16 A with therm. protection: 35 A gG (rated current 16 A set to)
Protection class	I
Degree of protection accd. to EN 60529	IP66
Enclosure colour	black

Wall socket

Cable entry	1 x M25 cable gland, 1 x M25 plastic Ex-screw plug or 2 x metal thread M20 with plastic Ex-screw plug
Connecting terminals	2 x 1.5 – 4.0 mm ²
Enclosure material	Glass-fibre reinforced polyester

Plug

Cable entry	Ø 8 – 18 mm (3-pole) / Ø 8 – 21 mm (4-pole) / 12 – 21 mm (5-pole)
Connecting terminals	1 x 1.0 – 4.0 mm ²
Enclosure material	Polyamide

Coupler

Cable entry	Ø 8 – 19 mm (3-pole) / Ø 8 – 21 mm (4-pole) / 12 – 21 mm (5-pole)
Connecting terminals	1 x 1.5 – 4.0 mm ²
Enclosure material	Polyamide

Flange socket

Connecting terminals	2 x 1.5 – 4.0 mm ²
Enclosure material	Polyamide

Plug install protected against higher mechanical risk 4J under -40°C.

Details for used cable glands see pages 2.3.ff

Ex-plugs and receptacles 16 A 3/4/5-pole up to 690 V



Plug



Coupler







Flange socket



Wall socket

Ordering details

Voltage	h	Type	Aux. contact	Cable entry	Weight	Extended temp		Standard temp	Order No.
						IIB+H2 -55 °C up to +45 °C (16 A)	IIC -20 °C up to +55 °C (10 A)		
Type 16A 3pol									
110-130V		Wall socket	-	KU	1.2 kg			X	GHG5114304R0001
		Wall socket	-	GE	1.2 kg			X	GHG5114304R0002
		Wall socket	-	GE	1.2 kg		X		GHG5114304R0102
		Wall socket	-	ME	1.3 kg			X	GHG5114304R3001
		Wall socket	-	ME	1.3 kg		X		GHG5114304R3101
		Wall socket	-	GM	1.3 kg			X	GHG5114304R3003
		Wall socket	-	GM	1.3 kg		X		GHG5114304R3103
		Flange socket	-		0.4 kg			X	GHG5118304R0001
		Flange socket	-		0.4 kg		X		GHG5118304R0101
		Coupler	-		0.7 kg			X	GHG5113304R0001
		Plug			0.35 kg		X		GHG5117304R0001
		Type 16A 3pol							
200-250 V		Wall socket	-	KU	1.2 kg			X	GHG5114306R0001
		Wall socket	-	GE	1.2 kg			X	GHG5114306R0002
		Wall socket	-	GE	1.2 kg		X		GHG5114306R0102
		Wall socket	-	ME	1.3 kg			X	GHG5114306R3001
		Wall socket	-	ME	1.3 kg		X		GHG5114306R3101
		Wall socket	-	GM	1.3 kg			X	GHG5114306R3003
		Wall socket	-	GM	1.3 kg		X		GHG5114306R3103
		Flange socket	-		0.4 kg			X	GHG5118306R0001
		Flange socket	-		0.4 kg		X		GHG5118306R0101
		Coupler	-		0.7 kg			X	GHG5113306R0001
		Plug			0.35 kg		X		GHG5117306R0001
		Type 16A 4-pole							
200-250 V		Wall socket	-	KU	1.2 kg			X	GHG5114409R0001
		Wall socket	-	ME	1.3 kg			X	GHG5114409R3001
		Wall socket	-	ME	1.3 kg		X		GHG5114409R3101
		Wall socket	-	GM	1.3 kg			X	GHG5114409R3003
		Wall socket	-	GM	1.3 kg		X		GHG5114409R3103
		Flange socket	-		1.0 kg			X	GHG5118409R0001
		Flange socket	-		1.0 kg		X		GHG5118409R0101
		Coupler	-		1.7 kg			X	GHG5113409R0001
		Plug			0.35 kg		X		GHG5117409R0001
		380-415V		Wall socket	-	KU	1.2 kg		
Wall socket	-			ME	1.3 kg			X	GHG5114406R3001
Wall socket	-			ME	1.3 kg		X		GHG5114406R3101
Wall socket	-			GM	1.3 kg			X	GHG5114406R3003
Wall socket	-			GM	1.3 kg		X		GHG5114406R3103
Flange socket	-				1.0 kg			X	GHG5118406R0001
Flange socket	-				1.0 kg		X		GHG5118406R0101
Coupler	-				1.7 kg			X	GHG5113406R0001
Plug					0.35 kg		X		GHG5117406R0001

Ex-plugs and receptacles 16 A 3/4/5-pole up to 690 V

1



Wall socket



Flange socket


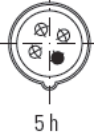



Coupler



Plug

Ordering details

Voltage	h	Type	Aux. contact	Cable entry	Weight	Temperature ratings		Order No.
						Extended temp IIB+H2 -55 °C up to +45 °C (16 A) IIC-20 °C up to +55 °C (10 A)	Standard temp IIC-20 °C up to +55 °C (16 A)	
Type 16A 4pol								
480-500V		Wall socket	-	KU	1.2 kg		X	GHG5114407R0001
		Wall socket	-	ME	1.3 kg		X	GHG5114407R3001
		Wall socket	-	ME	1.3 kg		X	GHG5114407R3101
		Flange socket	-		1.0 kg		X	GHG5118407R0001
		Flange socket	-		1.0 kg		X	GHG5118407R0101
		Coupler	-		1.7 kg		X	GHG5113407R0001
		Plug			0.35 kg		X	GHG5117407R0001
		600-690V		Wall socket	-	KU	1.4 kg	
Wall socket	-	ME		1.5 kg		X	GHG5114405R3001	
Wall socket	-	ME		1.5 kg		X	GHG5114405R3101	
Flange socket	-			1.0 kg		X	GHG5118405R0001	
Flange socket	-			1.0 kg		X	GHG5118405R0101	
Coupler	-			1.7 kg		X	GHG5113405R0001	
Plug				0.35 kg		X	GHG5117405R0001	
Type 16A 5pol								
200-250V 380-415V		Wall socket	-	KU	1.2 kg		X	GHG5114506R0001
		Wall socket	-	ME	1.3 kg		X	GHG5114506R3001
		Wall socket	-	ME	1.3 kg		X	GHG5114506R3101
		Wall socket	-	GM	1.3 kg		X	GHG5114506R3003
		Wall socket	-	GM	1.3 kg		X	GHG5114506R3103
		Flange socket	-		1.0 kg		X	GHG5118506R0001
		Flange socket	-		1.0 kg		X	GHG5118506R0101
		Coupler	-		1.7 kg		X	GHG5113506R0001
		Plug			0.35 kg		X	GHG5117506R0001

Other voltage ranges and versions available on request

KU = 1 x plastic cable glands M25, 1 x M25 plastic Ex-screw plug

ME = 2 x metal thread M20

GM = 2 x metal thread M20 with screw plug, with external earth bolt M6

GE = 2x plastic thread M20 without gland/screw plug

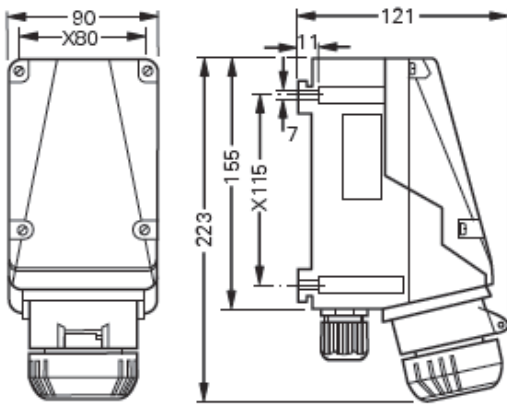


Wall socket

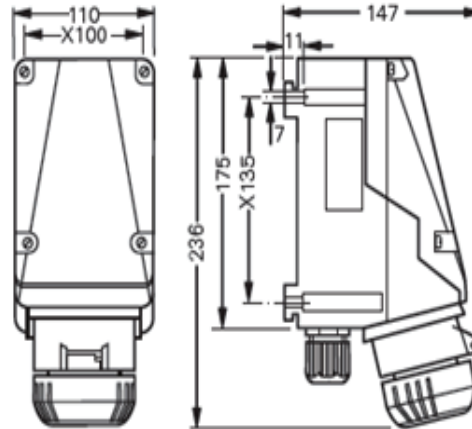


Plug

Dimension drawing / wiring diagram

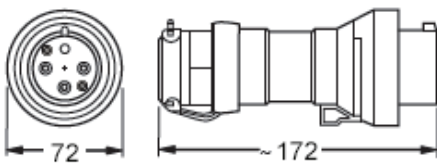


Wall socket 3-pole

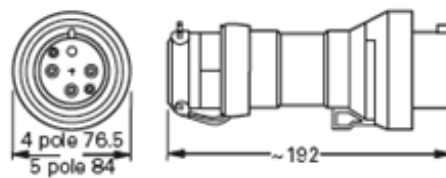


Wall socket 4/5-pole

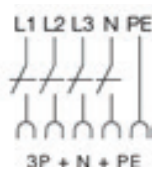
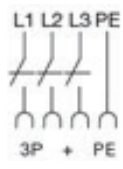
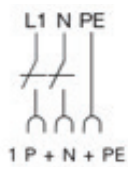
Wall socket 4/5-pole



Plug 3-pole



Plug 4/5-pole



Ex-plugs and receptacles 16 A 3/4/5-pole up to 690 V

1

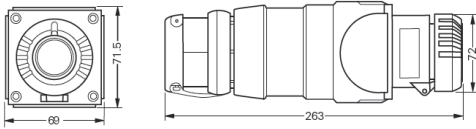


Flange socket

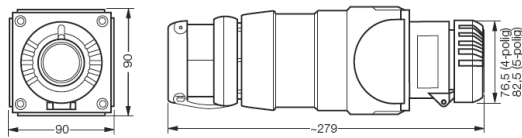


Coupler

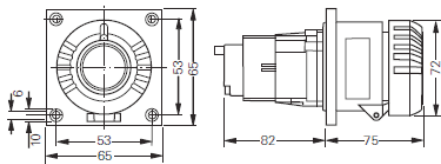
Coupler 3-pole



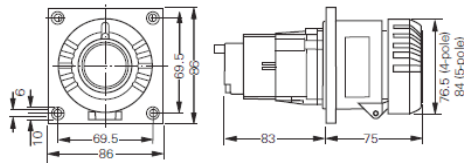
Coupler 4/5-pole



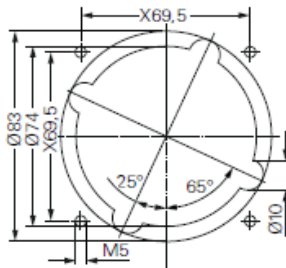
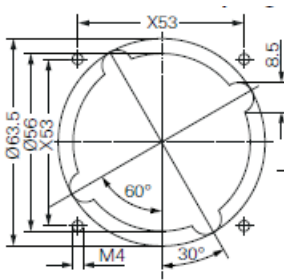
Flange socket 3-pole



Flange socket 4/5-pole



Assembly dimension



X= fixing dimensions



Angle adapter



Protective canopy



Plug cap



GHG 610 1901 R0126

Accessories

Type	Application	Fixing method	Order No.
------	-------------	---------------	-----------

Mounting plates for wall sockets 16 A

Size 4	for wall mounting	snap on	GHG 610 1953 R0126
Size 4	for trellis mounting	snap on	GHG 610 1953 R0126
Size 4	for pipe clamp	snap on	GHG 610 1953 R0130

Type	Order No.
------	-----------

Plug cap for plugs 16 A

Plug 16 A 3-pole	GHG 510 1901 R0001
Plug 16 A 4-pole	GHG 510 1901 R0002
Plug 16 A 5-pole	GHG 510 1901 R0003

Type	OU	Order No.
------	----	-----------

Accessories for mounting plates

Mounting set for pipes 1" (Ø 27 - 30 mm) for mounting plates with pipe fixing	10	GHG 610 1953 R0020
---	----	--------------------

Please pay attention that only order units (OU) according to the ordering details can be delivered.

Type	Application	Order No.
------	-------------	-----------

Protective canopy for mounting plate

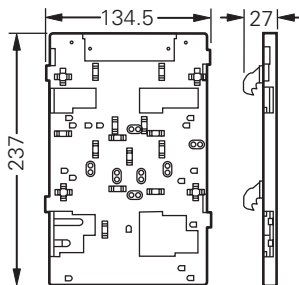
Size 4	for mounting plate size 4, snap on	GHG 610 1955 R0107
--------	------------------------------------	--------------------

Type	Application	Fixing method	Order No.
------	-------------	---------------	-----------

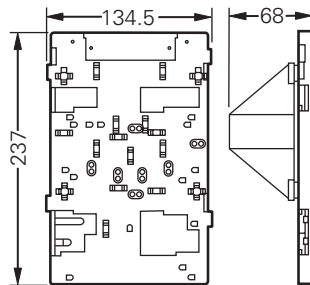
Angle adapter for Wall socket 16 A

16 A 3-pol	Panel mounting	screw	GHG 510 1921 R0001
16/32 A 4/5-pol	Panel mounting	screw	GHG 510 1921 R0002

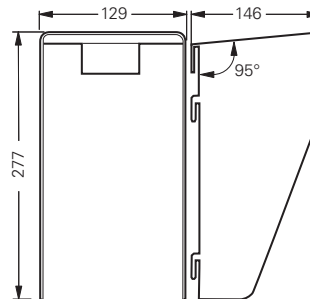
Dimension drawing



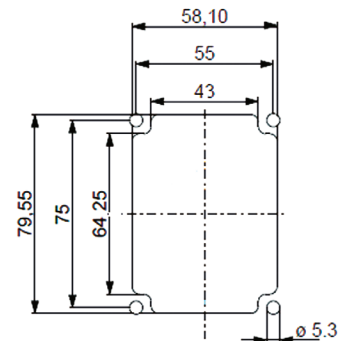
Mounting plate size 4 for wall/trellis mounting



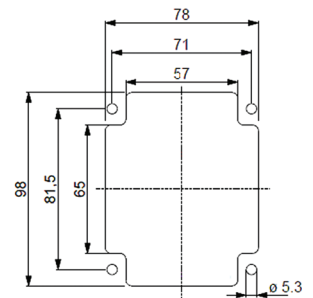
Mounting plate size 4 for pipe clamp



Protective canopy size 4



Angle adapter 16A 3-pol.



Angle adapter 16/32 A 4/5-pol.

Dimensions in mm